



We have professional and experienced teams for maintenance and troubleshooting to support our client.



PT. MTECH ENGINEERING NUSANTARA
HYDRAULIC ENGINEERING & AUTOMATION SYSTEMS

CONTACT US

Phone : (021) 58352036

Email : Inquiry@ptmtech.co.id

Fax : (021) 58354027

Email : marketing.support@ptmtech.co.id

Website : www.ptmtech.co.id

Ruko Green Garden Blok Z-2 No. 23

Kedoya Utara, Kebon Jeruk,
Jakarta Barat 11520

COMPANY PROFILE

Ruko Green Garden Blok Z-2 No. 23
Kedoya Utara, Kebon Jeruk, Jakarta Barat 11520
Phone : (021) 58352036
Fax : (021) 58354027
Email : inquiry@ptmtech.co.id
Email : marketing.support@ptmtech.co.id
Website : www.ptmtech.co.id

www.ptmtech.co.id

ABOUT US

PT. Mtech Engineering Nusantara was established in 2008 engaged in the field hydraulic and automation system for palm oil industry. We serve on project for mechanical fabrication, spare parts sales, and contract service for maintenance of mechanical, hydraulic, and automation systems of palm oil mill. We have a head office in West Jakarta and workshop in Tangerang, supported with the best technology and systems for our production and service to provide customer satisfaction.

OUR VISION

Being a trusted company in the palm oil industries in supply of mechanical, hydraulic, and automation system.

OUR MISSION

Keep innovating and committed to provide optimal service and quality.

OUR SERVICES

We have professional and experienced teams for maintenance and troubleshooting to support our client.

OUR PROJECT

1. Supply mechanical, hydraulic and automation systems.
2. Installation, testing and commissioning

**Automation optimizes
Productivity and
unlocks new levels of
Efficiency in the
industrial world**



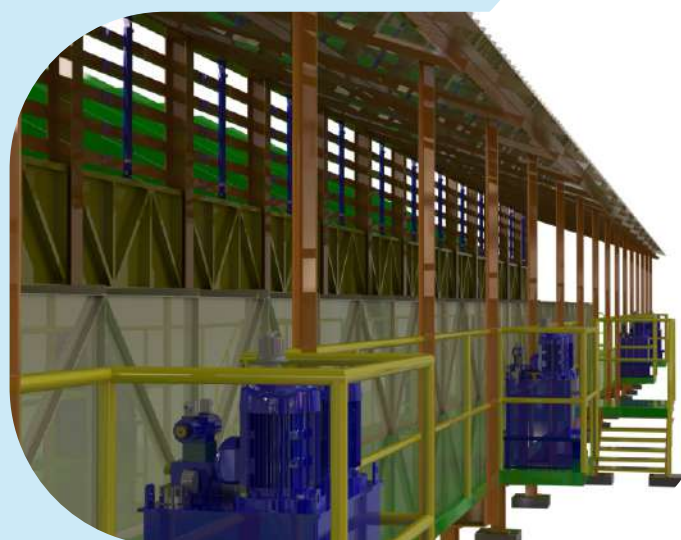
AFTER SALES SERVICE

1. Trading
 - Spare Parts of Hydraulic, Electrical & Automation.
2. Contract Service / Periodic Treatment.
 - Emergency Call.
 - Troubleshooting.



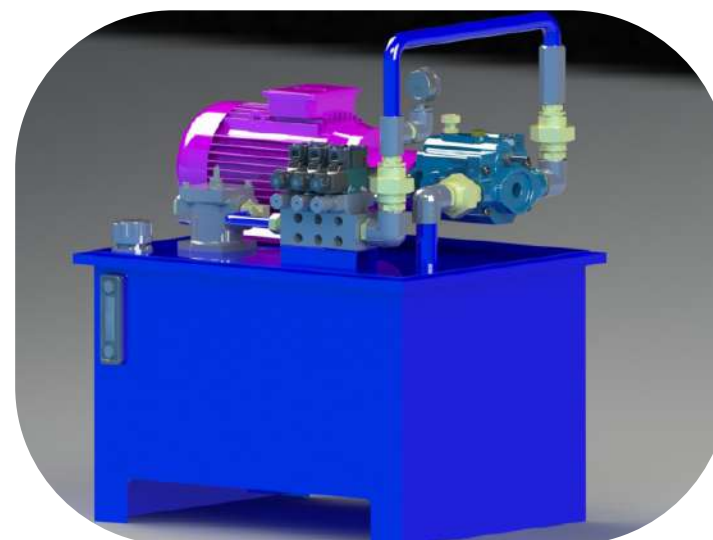
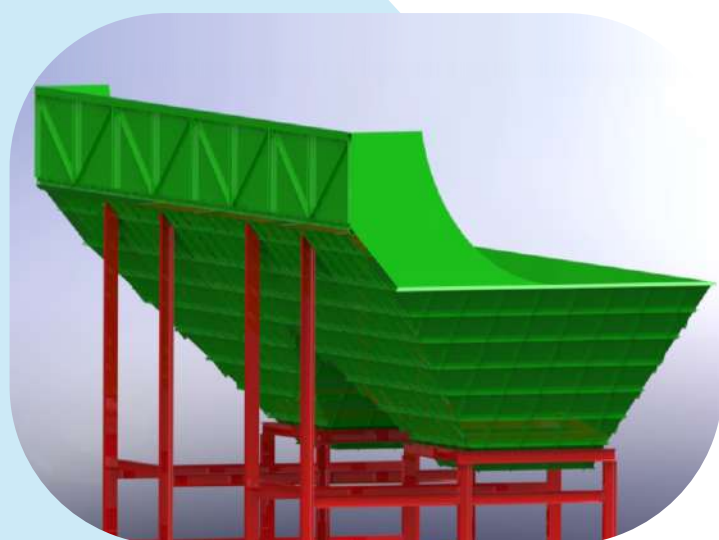
WINCH

TIPPER



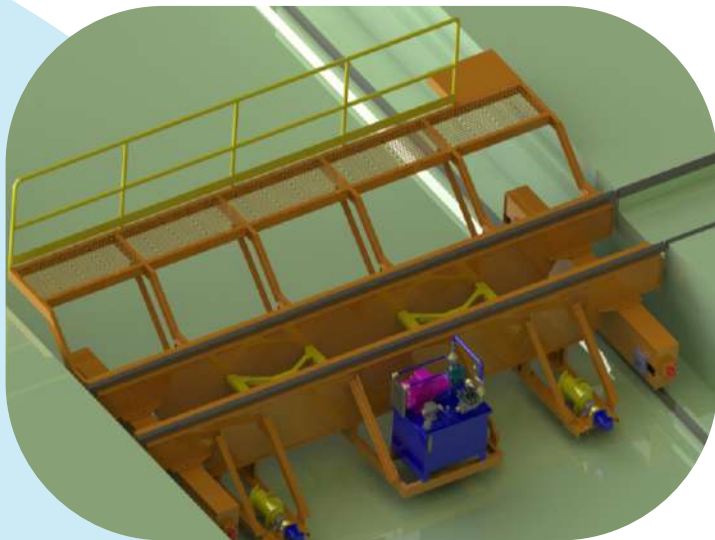
LOADING RAMP

CONVEYOR

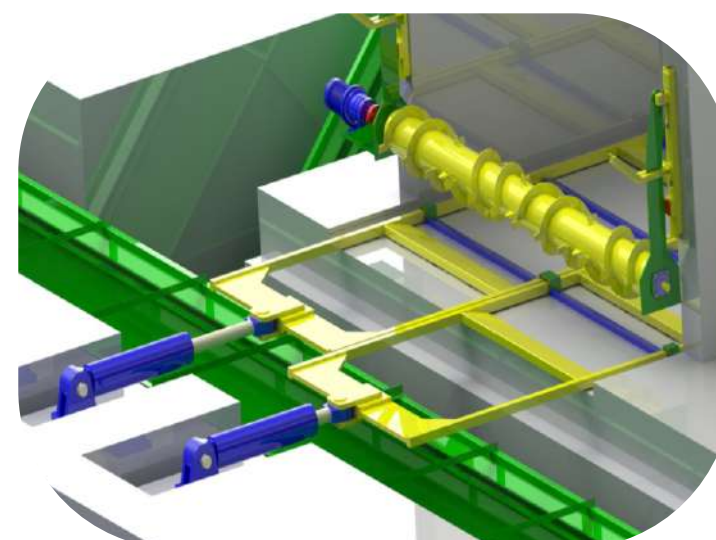


SFB HOPPER

HYDRAULIC POWER UNIT



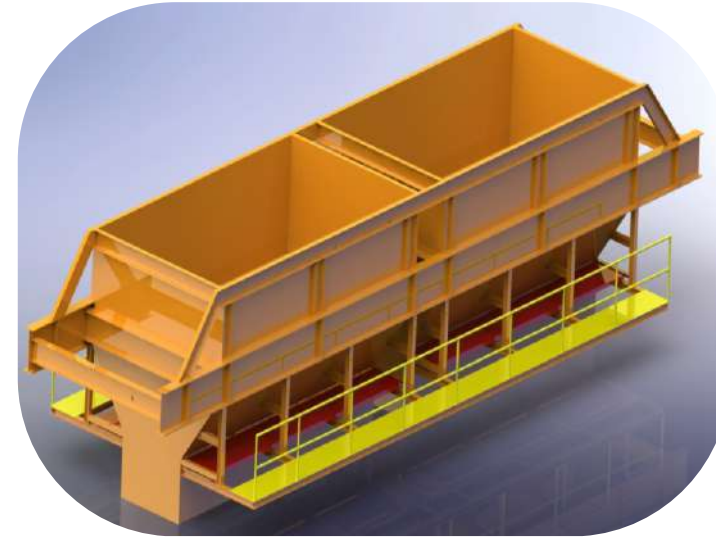
TRANSFER CARRIAGE



MOVING FLOOR



HYDRAULIC MOTOR



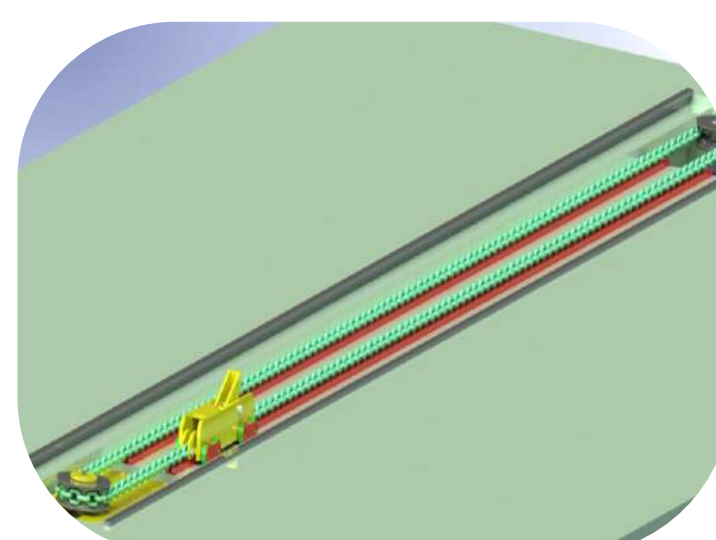
WEIGHING HOPPER



INDEXER



DRAWBRIDGE



UNDERTOW





HOSE



HYDRAULIC PIPE



CONTROL PANEL



HYDRAULIC CYLINDER



PRESSURE SENSOR



PRESSURE TRANSMITTER



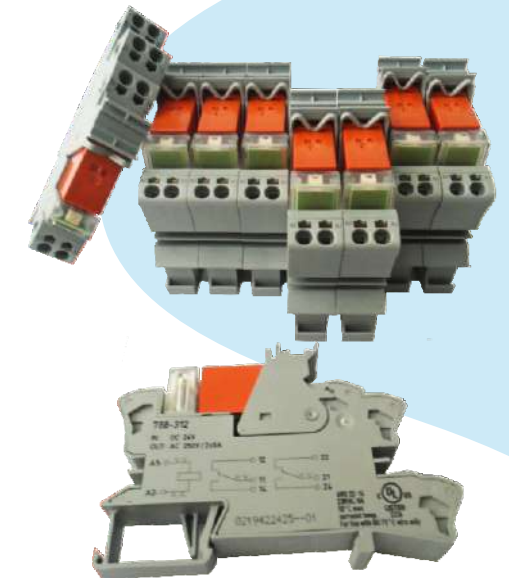
PRESSURE SWITCH RANGE 35BAR



PHOTO SENSOR



INDUCTIVE PROXIMITY SWITCH



RELAY SOCKET

DATASHEET



M22-SERIES

M22-DD-GR-X1/X0

Product Type :Double actuator pushbutton
 Design :Classical Non-Flush
 Actuator :Spring-return momentary
 Connection to :Yes With SWD-RMQ
 SmartWire-DT connections

M22-WRLK-.... (W/G/R/Y/B)

Product Type :Selector switch actuator
 Color :White/Green/Red/Yellow/Blue
 Switch positions :2
 Connection to :Yes with SWD-RMQ
 SmartWire-DT connections

M22-SWD-K11LED-.... (W/R/G/B)

Product Type :Function element
 Light color :White/Red/Green/Blue
 Connection :SmartWire-DT plug
 connector SWD4-8SF2-5
 Connection to : Yes
 SmartWire-DT

M22-SWD-LED-.... (W/R/G/B)

Product Type :LED element
 Light color :White/Red/Green/Blue
 Connection :SmartWire-DT plug
 connector SWD4-8SF2-5
 Connection to : Yes
 SmartWire-DT

M22-LH-.... (W/G/R/Y/B)

Product Type :Indicator light
 Lens color :White/Green/Red/Yellow/Blue
 Design :Extended, conical
 Connection to :Yes With SWD-RMQ
 SmartWire-DT connections

M22-L-.... (W/G/R/Y/B)

Product Type :Indicator light
 Lens color :White/Green/Red/Yellow/Blue
 Design :Flush
 Connection to :Yes With SWD-RMQ
 SmartWire-DT connections



M22-AMC

Catalog Notes :Without buzzer
 Product Type :Accessory
 Socket :BA 9s lamp socket
 Connection to :No
 SmartWire-DT

M22-XAMP

Product Type :Buzzer Ba9s
 Alarm type :Pulsed tone, 24 V DC (+10 %/-15 %)
 Loudness :83 dB
 Connection to :No
 SmartWire-DT

M22-R10K

Product Type :Potentiometer
 Design :Classical
 Resistance :10000 Ohm
 Connection to :No
 SmartWire-DT

M22-PVT

Product Type :Emergency stop/emergency switching off pushbutton
 Color :Red
 Unlocking :Turn-release method
 Connection to :No
 SmartWire-DT

M22-SWD-K22LED-.... (W/R/G/B)

Product Type :Function element
 Light color :White/Red/Green/Blue
 Connection :SmartWire-DT plug
 connector SWD4-8SF2-5
 Connection to :Yes
 SmartWire-DT

M22-SWD-K22

Product Type :Function element
 Connection :SmartWire-DT plug
 connector SWD4-8SF2-5
 SmartWire-DT :Yes

M22-WRLK3-.... (W/G/R/Y/B)

Product Type :Illuminated selector switch actuator
 Color :White/Green/Red/Yellow/Blue
 Actuator function :Switching function latching Maintained
 Switch positions :3
 Connection to SmartWire-DT :Yes, With SWD-RMQ connections

M22S-WLK-.... (W/G/R/Y/B)

Product Type :Illuminated selector
 Color :White/Green/Red/Yellow/Blue
 Actuator function :Momentary Spring-return
 Switch positions :2
 Connection to SmartWire-DT :Yes, With SWD-RMQ connections

M22-WLK3-.... (W/G/R/Y/B)

Product Type :Illuminated selector switch actuator
 Color :White/Green/Red/Yellow/Blue
 Actuator function :Momentary Spring-return
 Switch positions :3
 Connection to SmartWire-DT :Yes, With SWD-RMQ connections

M22-DL-W/G/R/Y/B

Product Type :Illuminated pushbutton actuator
 Color :White/Green/Red/Yellow/Blue
 Design :Classical Flush
 Actuator function ring :Spring-return Momentary
 Connection to SmartWire-DT :Yes, With SWD-RMQ connections

M22-WKV

Product Type :Selector switch
 Actuator function :Switching function latching Maintained
 Switch positions :2
 Connection to SmartWire-DT :Yes, With SWD-RMQ connections

M22-WRS

Product Type :Key-operated actuator
 Actuator function :Switching function latching Maintained
 Switch positions :2
 Connection to SmartWire-DT :Yes, With SWD-RMQ connections

A22-RLF + A22-E F (Pilot Lamp)

Product Type :Indicator light
 Lens color :White/Green/Red/Yellow/Blue
 Design :Flush
 Connection to SmartWire-DT : No

FAK-RV/KC01/Y

Product Type :Emergency stop
 Unlocking method :Pull-release
 Number of contacts :1



ZB-SERIES



ZB12-1,6

Product Type :Thermal overload relay
 Ir :1 - 1,6 A
 Aux.NC/NO contact :1/1

ZB12-4

Product Type :Thermal overload relay
 Ir :2.4 - 4 A
 Aux.NC/NO contact :1/1

ZB12-10

Product Type :Thermal overload relay
 Ir :6 - 10 A
 Aux.NC/NO contact :1/1

ZB12-12

Product Type :Thermal overload relay
 Ir :9 - 12 A
 Aux.NC/NO contact :1/1

ZB32-24

Product Type :Thermal overload relay
 Ir :16 - 24 A
 Aux.NC/NO contact :1/1

ZB32-32

Product Type :Thermal overload relay
 Ir :24 - 32 A
 Aux.NC/NO contact :1/1



ZB65-40

Product Type :Thermal overload relay
 Ir :24 - 40 A
 Aux.NC/NO contact :1/1

ZB65-57

Product Type :Thermal overload relay
 Ir :40 - 57 A
 Aux.NC/NO contact :1/1

ZB150-100/KK

Product Type :Thermal overload relay
 Ir :70 - 100 A
 Aux.NC/NO contact :1/1



RELAYS

D2RF2T1

Product Type :Ice Cube Relay
 Contact Form :DPDT
 Coil voltage :24 VDC
 Current Rating :12 A

D2RF4T1

Product Type :Ice Cube Relay
 Contact Form :4PDT
 Coil voltage :24 VDC
 Current Rating :6 A

D2PAP

Product type :D2 Series Socket
 Number Of Poles :Fourteen-pole
 Used with :4PDT relays

D2PAL

Product type :D2 Series Socket
 Number Of Poles :Eight-pole
 Used with :DPDT relays



Circuit Breaker

PLS6-C10/2

Product Type :MCB
 Amperage Rating :10 A
 Number Poles :2 pole
 Rated short-circuit :6 kA

PLSM-C10/2

Product Type :MCB
 Amperage Rating :10 A
 Number Poles :2 pole
 Rated short-circuit :10 kA

PLS6-B10/2

Product Type :MCB
 Number of poles :2 pole
 Amperage Rating :10 A
 Rated short-circuit :6 kA

PLS6-B20/2

Product Type :MCB
 Number of poles :2 pole
 Amperage Rating :20 A
 Rated short-circuit :6 kA

PLS6-B6/2

Product Type :MCB
 Amperage Rating :6 A
 Number Poles :2 pole
 Rated short-circuit breaking :6 kA

PLSM-C20/3

Product Type :MCB
 Amperage Rating :20 A
 Number Poles :3 pole
 Rated short-circuit breaking :10 kA

PLSM-C20/2-MW

Product Type :MCB
 Amperage Rating :20 A
 Number Poles :2 pole
 Rated short-circuit :10 kA

PFIM-40/4/01

Product Type :RCCB
 Amperage Rating :40 A
 Number Poles :4 pole
 Fault current rating :100 mA
 Rated short-circuit :10 kA

PFIM-40/2/01

Product Type :RCCB
 Amperage Rating :40 A
 Number of poles :2
 Fault current rating :100 mA
 Rated short-circuit :10 kA



TIMER

ETR4-70-A

Product Type :Timing relay
 Number of contacts :2
 Time range :0.05 - 360000 s
 Mains voltage :24-240 VAC/DC
 Surge rating :4kV
 Recovery time :70 ms (after 100 % time delay)
 Repetition accuracy :≤ 0.5 % (deviation)



ETR4-51-A

Product Type :Timing relay
 Number of contacts :1
 Time range :3 - 60 s
 Mains voltage :24-240VAC/DC
 Surge rating :4kV
 Recovery time :70 ms (after 100 % time delay)
 Repetition accuracy :≤ 0.5 % (deviation)



ETR4-11-A

Product Type :Timing relay
 Number of contacts :1
 Time range :0.05 - 360000s
 Mains voltage :24-240VAC/DC
 Surge rating :4kV
 Recovery time :70 ms (after 100 % time delay)
 Repetition accuracy :≤ 0.5 % (deviation)



DILM-SERIES



DILER-22G

Product Type :Control relay
 Supply Voltage :24 V DC
 Auxiliary NO/NC:2/2

DILM150-XHI22

Product Type :Auxiliary contact module
 Auxiliary NO/NC:2/2
 For Use :DILM40 ~ DILM170

DILM150-XHI11

Product Type :Auxiliary contact module
 Auxiliary NO/NC:1/1
 For Use :DILM40 ~ DILM170

DILM32-XHI11

Product Type :Auxiliary contact module
 Auxiliary NO/NC:1/1
 For Use :DILM7-10 ~ DILM38-10

DILM32-XHI11-S

Product Type :Aux. contact module
 Number of pole :2
 NC/NO contact :1/1
 For use with :DILM17 ~ DILM38

DILM7-10(RDC24)

Product Type :Contactor
 Voltage Relay :24VDC
 Number of pole :3
 Number of aux. NO :1
 Rated operational power :3 kW (at AC-3, 380/400 V, 50 Hz)



DILM9-10(RDC24)

Product Type :Contactor
 Voltage Relay :24VDC
 Number of pole :3
 Auxiliary NO :1
 Rated operational power :4 kW (at AC-3, 380/400 V, 50 Hz)

DILM12-10(RDC24)

Product Type :Contactor
 Voltage Relay :24VDC
 Number of pole :3
 Auxiliary NO :1
 Rated operational power :5.5 kW (at AC-3, 380/400 V, 50 Hz)

DILM17-10(RDC24)

Product Type :Contactor
 Number Poles :3 pole
 Auxiliary NO/NC :1/0
 Supply voltage :24 ~ 27 VDC
 Rated operational power :7,5 kW (at AC-3,380/400 V, 50 Hz)

DILM25-10(RDC24)

Product Type :Contactor
 Number Poles :3 pole
 Auxiliary NO/NC :1/0
 Supply voltage :24 ~ 27 VDC
 Rated operational power :11 kW (at AC-3,380/400 V, 50 Hz)

DILM32-10RDC24

Product Type :Contactor
 Number Poles :3 pole
 Auxiliary NO/NC :1/0
 Supply voltage :24 ~ 27 VDC
 Rated operational power :15 kW (at AC-3,380/400 V, 50 Hz)

DILM65-RDC24

Product Type :Contactor
 Number Poles :3 pole
 Supply voltage :24 ~ 27 VDC
 Rated operational power :30 kW (at AC-3,380/400 V, 50 Hz)

DILM17-10

Product Type :Contactor
 Number Poles :3 pole
 Supply voltage :230-240 VAC 50/60Hz
 Auxiliary NO/NC :1/0
 Rated operational power :7.5 kW (at AC-3,380/400 V, 50 Hz)

DILM25-10

Product Type :Contactor
 Number Poles :3 pole
 Supply voltage :230-240 VAC 50/60Hz
 Auxiliary NO/NC :1/0
 Rated operational power :11 kW (at AC-3,380/400 V, 50 Hz)



DILM32-10

Product Type :Contactor
 Number Poles :3 pole
 Supply voltage :230-240 VAC 50/60Hz
 Auxiliary NO/NC :1/0
 Rated operational power :15 kW (at AC-3,380/400 V, 50 Hz)



DILM40

Product Type :Contactor
 Number Poles :3 pole
 Supply voltage :230/240VAC 50/60Hz
 Rated operational power :18.5 kW (at AC-3, 380/400 V, 50 Hz)



DILM50

Product Type :Contactor
 Number Poles :3 pole
 Supply voltage :230/240VAC 50/60Hz
 Rated operational power :22 kW (at AC-3, 380/400 V, 50 Hz)



EU5C-SWD-CAN

Product Type :Communication module
 Supply Voltage :24 VDC
 Connection :SmartWire-DT gateway for connecting up to 99 SmartWire-DT modules
 Protocol :CANopen®
 Number of modules :99 (SmartWire-DT)
 Station :SmartWire-DT master, SmartWire-DT network 2 - 32, Station address, Fieldbus interface



EU5E-SWD-8DX

Product Type :Accessory Input module
 Number of inputs (Digital) :8 (24 VDC)
 Connection to SmartWire-DT Station :Yes
 :SmartWire-DT slave

EU5C-SWD-PF2-1

Product Type :Accessory Powersupply
 Supply Voltage :24 VDC
 Connection :2 x SmartWire-DT blade terminal
 SWD4-8MF2

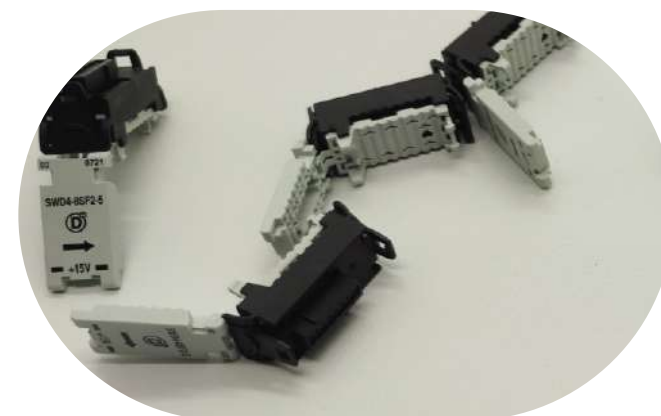
DXG-NET-CANOPEN

Product Type :Accessory Communication module
 Protocol :CANopen®
 Catalog Notes :Terminal strip, 5-terminal



SWD4-8SF2-5

Product Type :Accessory External device plug
 Functions :For connecting the ribbon cable to SmartWire-DT modules



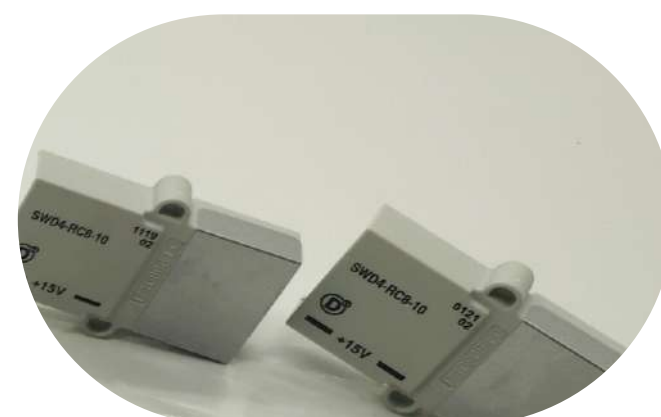
SWD4-8SFF2-5

Product Type :Accessory Coupling
 Functions :To connect SWD ribbon cables over SWD4-8MF2 blade terminals
 Connection to SmartWire-DT :Yes



SWD4-RC8-10

Product Type :Accessory Bus termination resistor
 Functions :For the SmartWire-DT bus termination on the SmartWire-DT ribbon cable





XNE-....DI-24VDC-P (8 or 16)

Product Type :XNE-Input Digital module
 Number Channels :8 or 16
 Digital Input voltage:24 V DC,
 11 ~ 30 VDC (high level)
 -5 ~ 5 VDC (low level)

XNE-....DO-24VDC-0.5A-P (8 or 16)

Product Type :XNE-Output Digital module
 Number Channels :8 or 16
 Supply voltage :24 VDC
 Output voltage :24VDC
 Output Current :0.5A

XNE-4AO-U/I

Product Type :XNE-Output Analog module
 Number Channels :4
 Output analog :0/4 ~ 20 mA,-10/0 ~ 10 VDC
 Resolution of the :16 Bit
 analog outputs

XNE-GWBR-CANOPEN

Product Type :Gateway
 Catalog Notes :supports modules (XN, XNE)
 Supply voltage :24 V DC (18 to 30 V DC)
 Protocol :CANopen®, Field bus connection PS/2 socket (Service interface)
 Maximum station :Maximum station 62 cards

XNE-8AI-U/I-4PT/NI

Product Type :XNE Analog Input module
 Number Channels:8 (U/I) / 4 (PT/NI/R)
 Input Analog :0/4 ~ 20 mA
 -10/0 ~ 10 VDC
 0 ~ 250/400/800/2000/4000 Ohm
 Resolution of the :16bit
 analog Inputs

XN-322-....DO-P05 (8 or 16)

Product Type :XN Digital Output module
 Number Channels:8 or 16
 Supply voltage DC:24 V DC (18 to 30 V DC)
 Output voltage :24 V DC,
 < 1 V DC (Low level)
 < 24 V DC (High level)
 Output Current :0.5 A

XN-322-4DO-RNO

Product Type :XN Digital Output module
 Number Channels:4
 Output Current :6A

XN-322-20DI-PD

Product Type :XN Digital Input module
 Number Channels:20
 Supply voltage :24 V DC (18 to 30 V DC)
 Input voltage :14 ~ 30 V (high level)
 0 ~ 8 V (low level)

XN-322-8AI-I

Product Type :XN AI slice module
 Number Channels:8
 Resolution :16 Bit
 Supply voltage :24 V DC (18 to 30 V DC)
 Input Current :0/4 - 20 mA



XN-312-GW-CAN

Product Type :Gateway XN
 Supply voltage :24 V DC (18 to 30 V DC)
 Protocol :CANopen®, CAN, other Bus
 Maximum station :32 modules (XN-322) in slice



XN-322-8AIO-I

Product Type :XN AI/AO slice module
 Input Channels :4 Analog inputs (0/4 - 20 mA)
 Output Channels :4 Analog Outputs (0/4 - 20 mA)
 Resolution :16 Bit (Analog inputs)
 :12 Bit (Analog outputs)
 Supply voltage :24 V DC (18 to 30 V DC)



XN-322-1CNT-8DIO

Product Type :XN Counter Slice module
 Counter :500 kHz max. (X4 encoding),
 frequency Operating Mode RS422/TTL
 Channel DI/DO :4/4
 Input :Low level (0 ~ 8 V)
 High level (14 ~ 30 V)
 Output :Low level (< 1 VDC)
 High level (< 24 VDC)



PKE-SERIES

PKE-XTUA-65

Product Type :Accessory Trip block
 Number of poles :3
 Overload release :16 - 65 A
 current setting
 Connection to :Yes, In conjunction with
 SmartWire-DT PKE-SWD-SP

PKE-XTUA-32

Product Type :Accessory Trip block
 Number of poles :3 pole
 Overload setting :8 - 32 A
 Connection to :Yes, In conjunction with
 SmartWire-DT PKE-SWD-SP and
 PKE-SWD-32

PKE-SWD-32

Product Type :SmartWire-DT
 slave Accessories
 Use For :PKE12/32



PKE32

Product Type :Motor-protective circuit-breaker
 Number of poles :3
 Overload release :32 A
 current

PKE-SWD-SP

Product Type :SmartWire-DT slave Accessories
 Number of poles :3 pole
 Use For :PKE12/32/65
 Datasheet :

PKE-65

Product Type :Motor-protective circuit-breaker
 Actuator type :Turn button
 Overload release :65 A
 current
 Number of poles :3



PKE-XH

Product Type :Accessory Door coupling handle
 Features :Lockable, ON/OFF switch position
 and "+" (tripped)

NH11-PKZ0/XTPAXSA11

Product Type :Accessory standard auxiliary
 contact
 Used with :Motor protective circuit-breaker
 Aux NO/NC :1/1

PKE-32/XTU-32

Product Type :System-protective circuit-
 breaker
 Number of poles :Three-pole
 Overload release :8 - 32 A
 current setting
 Rated operational:15 kW (at AC-3, 380/400
 power V, 50 Hz)



MSC-DEA-12-M12

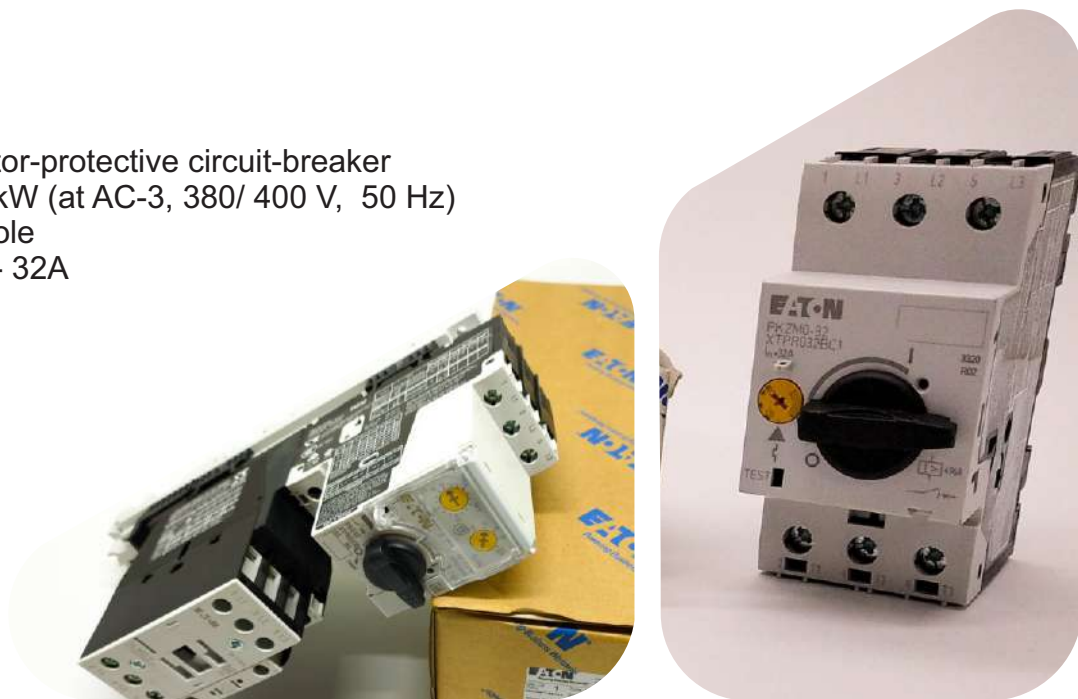
Product Type :DOL starter
 Connection to SmartWire-DT :Yes, In conjunction with PKE-SWD-32 module
 Aux NO/NC :0/1
 Ir :3 - 12 A
 Rated operational power :5.5 kW(at 380 V 400 V 415 V, 50 Hz)
 Control supply :24VDC

MSC-DEA-32-M32

Product Type :DOL starter
 Connection to SmartWire-DT :Yes, In conjunction with PKE-SWD-32 module
 Aux NO/NC :0/1
 Ir :8 - 32 A
 Rated operational power :15 kW (at AC-3, 380/400 V, 50 Hz)
 Control supply :24 VDC

PKZM0-32

Product Type :Motor-protective circuit-breaker
 Rated operational power :15 kW (at AC-3, 380/ 400 V, 50 Hz)
 Number of poles :3 pole
 Overload current :25 - 32A



BZMB1-SERIES

BZMB1-A16

Product Type :MCCB
 Number of poles :Three-pole
 Amperage Rating :16 A
 Equipment heat dissipation :3.4 W

BZMB1-A20

Product Type :MCCB
 Number of poles :Three-pole
 Amperage Rating :20 A
 Equipment heat dissipation :4.7 W

BZMB1-A25

Product Type :MCCB
 Number of poles :Three-pole
 Amperage Rating :25 A
 Equipment heat dissipation :6.2 W

BZMB1-A32

Product Type :MCCB
 Number of poles :Three-pole
 Amperage Rating :32 A
 Equipment heat dissipation :7.7 W

BZMB1-A40

Product Type :MCCB
 Number of poles :Three-pole
 Amperage Rating :40 A
 Equipment heat dissipation :10.6 W

BZMB1-A50

Product Type :MCCB
 Number of poles :Three-pole
 Amperage Rating :50 A
 Equipment heat dissipation :13.3 W

BZMB1-A63

Product Type :MCCB
 Number of poles :Three-pole
 Amperage Rating :63 A
 Equipment heat dissipation :19.5 W

NZMB1-A63

Product Type :MCCB
 Number of poles :Three-pole
 Overload Current setting :50 ~ 63 A
 Equipment heat dissipation :14.17 W



NZM-XSWD-704

Product Type :Electronic accessory
 Accessory/spare part type :Diagnostics and communication
 Used with :SmartWire-DT interface for NZM circuit breakers
 Supply voltage DC: 24 VDC
 Extension With :NZM-XSWD-CAB, M22-K10, M22-K01
 Connection to SmartWire-DT :Yes
 Overload proof :Yes, with diagnostics



EASYE4-SERIES

easy-E4-DC-12TCX1

Product Type :Control relay easyE4
 Network :Ethernet
 Analog inputs :0 ~ 10 V (12 Bit)
 Digital inputs :8(24VDC)
 Digital outputs :4(Transistor outputs 0,5 A)
 Terminal :Screw
 With display :No



easy-E4-DC-16TE1

Product Type :I/O expansion EASY
 Digital inputs :8 (24VDC)
 Voltage input :≤5V (False), ≥ 15V (High)
 Digital outputs :8(Transistor outputs 0,5 A)
 Terminal :Screw

easy-E4-DC-8TE1

Product Type :I/O expansion EASY
 Digital inputs :4 (24VDC)
 Voltage input :≤5V (False), ≥ 15V (High)
 Digital outputs :8(Transistor outputs 0,5 A)
 Terminal :Screw

easy-E4-DC-6AE1

Product Type :I/O expansion EASY
 Resolution AI/AO :12 Bit (value 0 ~ 4095)
 Supply voltage :24V (20.4 to 28.8 V)
 Number AI/AO :4 / 2
 Analog Input :0/4 ~ 20 mA, 0 ~ 10 VDC
 Analog Output :0/4 ~ 20 mA, 0 ~ 10 VDC

easy-E4-DC-12TC1

Product Type :Control relay easyE4
 Network :Ethernet
 Analog inputs :0 ~ 10 V (12 Bit)
 Digital inputs :8(24VDC)
 Digital outputs :4(Transistor outputs 0,5 A)
 Terminal :Screw
 With display :Yes



PSG120E24RM

Product Type :Power supply unit
 Number of phases :1
 Supply voltage AC :85 - 264 V (50/60Hz)
 Power output :120W
 Output voltage :24VDC
 Max. output current :5A

PSG240E24RM

Product Type :Power supply unit
 Number of phases :1
 Supply voltage AC :85 - 264 V (50/60Hz)
 Power output :240W
 Output voltage :24VDC
 Max. output current :10A

PSG480E24RM

Product Type :Power supply unit
 Number of phases :1
 Supply voltage AC :85 - 264 V (50/60Hz)
 Power output :240W
 Output voltage :24VDC
 Max. output current :10A



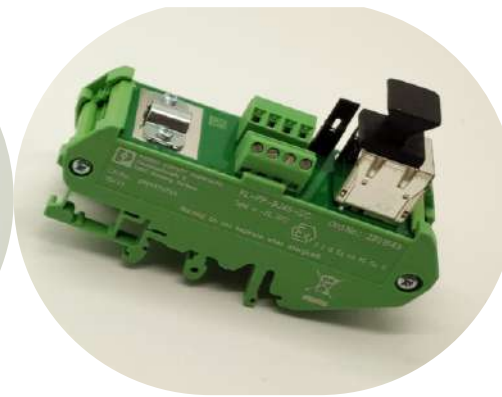
FL-PP-RJ45-SC

Product Type :Patch panel
 Serial transmission speed :10/100/1000 Mbps
 No of Channels :1



MA-15

Product Type :Surge protection
 Surge current :3 ~ 12kA (8/20µs)
 Working voltage :240VAC, 47-63Hz, 280VDC



COUPLING ENCODER

Part Type :ACC-Pack-Inc-9402 8*8
 Shaft diameter :d1 = 8 mm , d2 = 8 mm
 Rotational speed :max. 3000/ min
 Moment of inertia :10 kg m² x 10⁻⁷

ENCODER

Part Type :TVI50N-09BK0**T
 Output frequency :max. 100 kHz
 Rotational speed :max. 6000/ min
 Pulse count :max. 1024



BD35 Type UDM35

- Front protection degree: IP67, NEMA12, NEMA4x "Indoor use only"
- Linearization of Hz inputs up to 16 points
- Multi-input modular instrument 3 1/2 DGT LED
- 0.1% RDG basic accuracy
- TRMS AC current and voltage measurements
- AC/DC current measurements: selectable full scales (200µA to 5A)
- AC/DC voltage measurements: selectable full scales (200mV to 500V)
- °C or °F temperature measurements (Pt100-250-500-1000, Ni100, TC J-K-S-T-E)
- Resistance measurements: selectable full scales (20Ω to 20kΩ)
- Dual rate, speed, frequency and period measurement (0.001Hz to 50kHz)
- Up to 4 independent alarm set-points (optional)
- 20mA/10VDC analog output (optional)
- Serial port RS485 or RS232 (optional)
- MODBUS, JBUS communication protocol



DAD141.1

Dimensions and weight :120 x 105 x 22.5 mm (H x L x W), weight approx. 170 g
 AD converter :Delta-Sigma, ± 24 bit
 Analog input range :±15 mV bipolar (± 3 mV/V @ 5 VDC excitation)
 Minimum input sensitivity :0.2 µV/e
 Excitation :5 V DC, load cell(s) resistance 50 - 2000 ohms; 6 wire technic
 Calibration :Electronical calibration in mV/V (eCal) or with test weight(s)
 Digital low pass filter :FIR Filter 2.5 to 19.7 Hz or IIR Filter 0.25 to 18 Hz - adjustable in 8 steps
 Weighing functions :Zero, gros, tare, net, filter, etc.
 Communication ports :RS 422/485 and Ethernet
 Power supply :12 ... 24 V DC ±10 %, < 4 W
 Vibration resistance :2.5g @ operation, 5g @ storage
 Serial Interface :RS 422/485, 9600 ... 115200 Baud – half/full duplex
 Protocol & Address range :ASCII; address range 1 ... 31
 Modbus RTU :Binary data
 Ethernet interface :RJ45, 10/100 Mbit/s, isolated
 Ethernet TCP/IP :protocol ASCII, TCP port 23
 Modbus TCP :Embedded in TCP/IP packages, protocol binary data, TCP port 502
 IP address :Setup via serial port or panel buttons – Factory default: 192.168.0.100
 Analog current output :0 – 20mA or 4 – 20mA, 500ohm, isolated
 Analog voltage output :0 – 10V, 0 – 5V, ±5V, ±10V, 10kohm, isolated
 Digital logic inputs :2 inputs (10 – 30V, 1 – 3mA), common ground, isolated
 Digital logic outputs :3 outputs (semiconductor relays) 30 V DC/AC, 0.5 A, common ground, isolated



DIRECTIONAL CONTROL VALVE

General Description

Product Type	:Solenoid Valve
Max. Pressure	:315 bar (4500 psi)
Max. Flow Rates	:Up to 120 L/min (32 Usgpm), dependent on spool
Mounting Surface	:ISO 4401 size 05 NFPA D02 DIN 24340 (Ng10)

A range of four-port solenoid operated directional control valves with four-land spool design to facilitate provision of smooth, variable valve response speeds.

The range includes:

- AC and DC wet-armature solenoid options with ISO 4400 (DIN 43650) electrical connections and manual overrides.
- Variable speed changeover potential in all DC models; see "Response Times" section
- Many spool types; in spring-offset, spring-centered and detented arrangements.





SOLENOID VALVE



VANE PUMP



PUMP



FILTER

PUMP



FILTER



SEAL

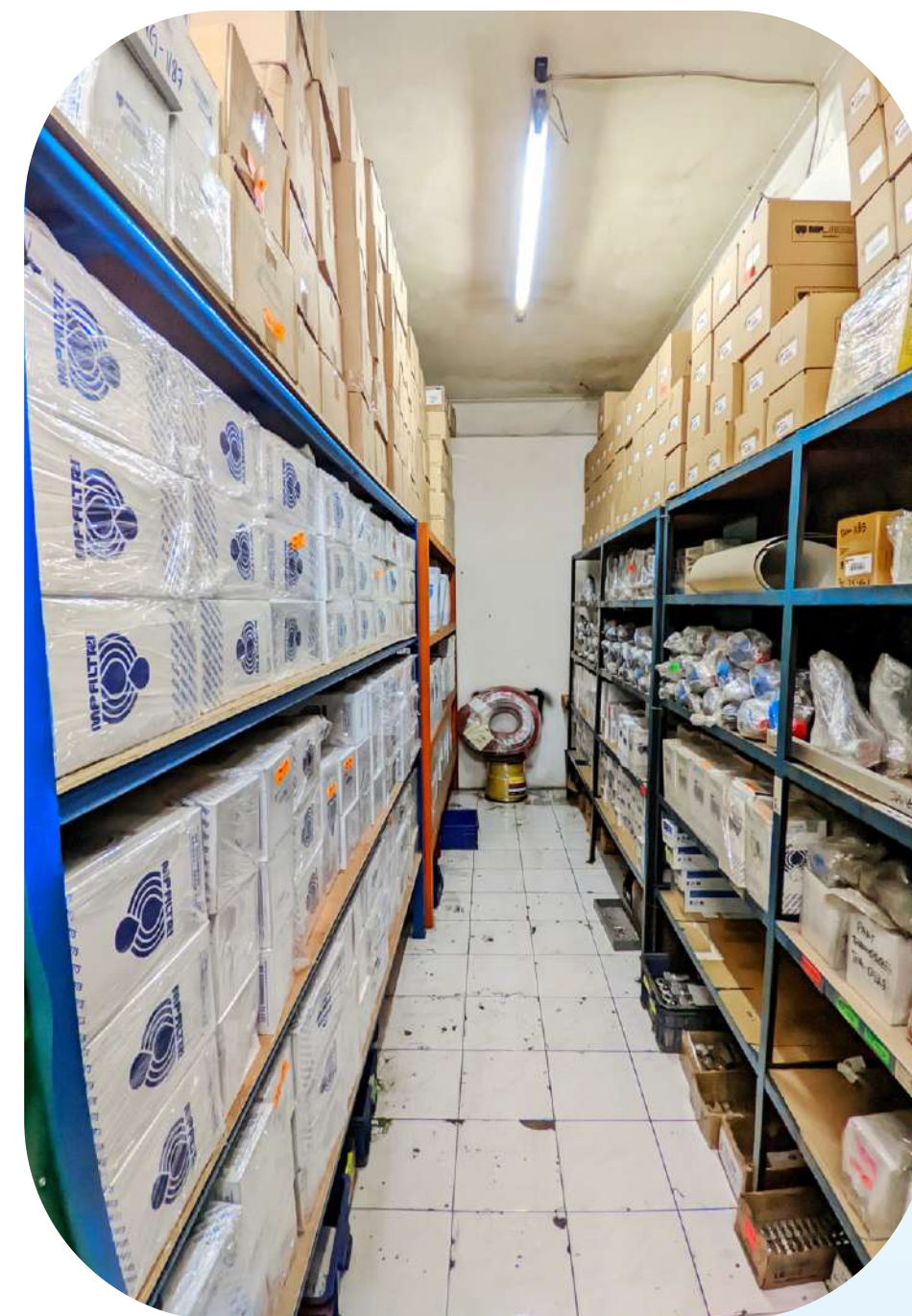


FILTER



HYDRAULIC MOTOR CHARLYNN

OUR WAREHOUSE



THANK YOU FOR YOUR ATTENTION

WE ARE WAITING FOR YOUR ORDER